

CERAMIC PRODUCTS ARGENTA CERÁMICA

Medium Stoneware Tile

THIS INCLUDES DIFFERENT MODELS
OF DRY-PRESSED STONEWARE
TILES:

ABSORPTION GROUP B1a WITH WATER
ABSORPTION $\leq 0.5\%$ AND
ABSORPTION GROUP B1b WITH WATER
ABSORPTION BETWEEN 0.5% AND $\leq 3\%$

CERAMIC PRODUCTS

ARGENTA CERÁMICA



Medium Stoneware Tile

Dry-pressed stoneware tiles. This includes different models:

Absorption group BIa with water absorption $\leq 0.5\%$, and
Absorption group BIb with water absorption between 0.5% and $\leq 3\%$.







Ceramic floor and wall tiles

Contact details

Argenta Cerámica, S.L. www.argentaceramica.com
Pol. Ind. Vall d'Alba, Vall d'Alba (Castellón)
Telephone: 964324003
argenta@argentaceramica.com

Issue date: May 2018

Summary table: Environmental parameters to which the material makes a specific contribution. Detailed in the BREEAM environmental certification sheet

	Supporting documents	Certificates: EPD, LAB TESTS	Self-declarations	Potential
Location & Transportation 	Material reflection index SRI	Rainwater management Ext. light control ...		
Energy & Atmosphere 	Energy absorbed	Greenhouse gas effect Reduction in energy demand	Equipment efficiency Other polluting gases Renewable energy Energy management ...	
Materials 	Accredited location	Pre-consumption recycling Post-consumption recycling	Potential reuse Certified wood Site waste Chemical composition	ISO 14001
Water 	Consumption < reference	Water management ...		
Indoor Environment 	Low emission of VOCs	Low emission of formaldehydes Comfort control Lighting control Acoustic control Air quality ...		
Innovation 	Innovation Design	...		

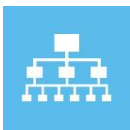
NOTES:

- The information in this document to comply with the credits for the environmental certificate study system chosen (BREEAM) is based on the information that the company contributes and provides. In order to ensure possible compliance with said credits, it is necessary, during the process of awarding any seals, to verify the validity of the information and data provided by the company.
- This document does not constitute product certification, nor does it guarantee compliance with the local regulations in force.
- The conclusions of this study apply only to the products mentioned in this report and are subject to the invariability of the product's technical conditions.
- The validity of this document is subject to expiry of the supporting documents or changes in regulations and/or versions of environmental certificate seals.
- This document informs of the possible contribution of the product studied to obtaining BREEAM certification.

Table of contents

Table of contents	3
SUMMARY OF BREEAM CREDITS	4
MANAGEMENT	6
• GST3, Construction site impacts	6
ENERGY	7
• ENE1, Energy efficiency	7
MATERIALS	8
• MAT1, Life-cycle impacts.....	8
MATERIALS	9
• MAT3, Responsible sourcing of materials.....	9
INNOVATION	10
• Innovation.....	10
OTHER CONSIDERATIONS	11
• Other considerations.....	11

SUMMARY OF BREEAM CREDITS



MANAGEMENT

- ◆ GST3, Construction site impacts



ENERGY

- ◆ ENE1, Energy efficiency



MATERIALS

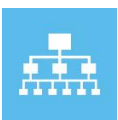
- ◆ MAT1, Life-cycle impacts
- ◆ MAT3, Responsible sourcing of materials



INNOVATION

- ◆ Innovation

BREEAM ES environmental categories



Management



Health and wellbeing



Energy



Transport



Water



Materials



Waste



Land use and ecology



Pollution



Innovation

BREEAM ES Certification Standards

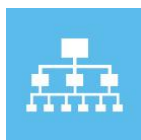
URB BREEAM ES Urban planning
NC BREEAM ES New-build

VIV BREEAM ES Housing

USO BREEAM ES In use

CREDIT SHEET

BREEAM ES



CATEGORY MANAGEMENT

➤ GST3, Construction site impacts
(Compliance with this requirement may add up to 5 points in **BREEAM ES NC 2015**)

Intent	To recognise and encourage construction sites managed in an environmentally sound manner in terms of resource use, energy consumption and pollution.
Requirements	The pallets used by Argenta Cerámica have an FSC and PEFC custody chain certificate that guarantees that the wood has been legally harvested and traded. They may therefore contribute to compliance with point 8 of the criterion, valued at 1 point in the certificate.
Assessment procedure	Wood harvesting: Point 8 of the GST3 criterion assesses the legal harvesting of wood. Therefore, confirmation is requested that all of the construction wood used in the project is legally harvested and traded.
Analysis example	N/A
Supporting documents	01_1-Certificado FSC.pdf 01_2-Certificado PEFC.pdf 01_3-Carta declaración madera controlada.pdf
Reference standard	FSC-STD-50-001 (v1.2) EN FSC-STD-40-005 (v2.1) EN FSC-STD-40-004 (v2.1) EN



CATEGORY ENERGY

ENE1, Energy efficiency (Compliance with this requirement may add up to 15 points in **BREEAM ES NC 2015**)

Intent	To recognise and encourage buildings that minimise their operational energy consumption through good design.
Requirements	<p>The products included in the medium stoneware tile group from the company Argenta Cerámica, S.L. have very low thermal conductivities, contributing to efficiency and energy-saving.</p> <p>The thermal conductivity of the products in group Bia is 1.50 W/mK and that for group Bib is 1.46 W/mK, as described in the certificate issued by the accredited laboratory.</p> <p>The thermal conductivity and thicknesses of the product can be used to perform the energy simulation of the target building, in accordance with LEED requirements.</p> <p><i>NOTE: The final result to determine the total points depends on the design of the building, its location, direction, materials, definition of the envelope and the systems used.</i></p>
Assessment procedure	<p>BREEAM ES assesses the energy efficiency of the building compared to the efficiency of a reference building. The energy performance of the building is calculated through a simulation with a computer program approved by the Ministry of Industry, Energy and Tourism.</p> <p>BREEAM ES calculates the energy efficiency coefficient with the BREEAM ES assessment tool and the relevant score is given based on said coefficient.</p> <p>The energy efficiency coefficient takes into account operational energy demand, consumption of primary energy and total CO₂ emissions.</p> <p>Exemplary level:</p> <ul style="list-style-type: none"> • “Positive Energy Balance Building (EB+)” in terms of total operational energy consumption • Building with zero net CO₂ emissions • Covering part of consumption with generation with carbon neutral facilities or accredited external renewables
Analysis example	N/A
Supporting documents	<p>02_1-Certificado conductividad térmica grupo Bia.pdf</p> <p>02_2-Certificado conductividad térmica grupo Bib.pdf</p>
Reference standard	ASTM D7984-16



CATEGORY MATERIALS

🏠 **MAT1, Life-cycle impacts** (Compliance with this requirement may add up to 7 points in **BREEAM ES NC 2015**)

Intent	To recognise and encourage the use of robust and appropriate life cycle assessment tools and consequently the specification of construction materials with a low environmental impact (including embodied carbon) over the full life cycle of the building.
Requirements	<p>OPTION 1: The products included in the medium stoneware tile group from the company Argenta Cerámica, S.L. have an EPD verified by an independent third party.</p> <p>OPTION 2: The impacts assessed in the EPD may be used to perform the LCA, thus contributing to compliance with option 2. The EPD data are verified and have numerous indicators for environmental impacts, waste generation and energy consumption.</p>
Assessment procedure	<p>OPTION 1 (1 point): 80% of products with Environmental Product Declarations (EPD) have been specified in at least 30% of the 9 categories specified by BREEAM, including ceramics.</p> <p>OPTION 2 (1 to 6 points): The project uses a life cycle analysis (LCA) tool in accordance with the BREEAM specifications to measure the environmental life cycle impact of the building's elements. The analysis must include at least facades, windows, indoor flooring, ceiling frames, interior vertical partitions, party walls and roofs. The score obtained for this criterion depends on the robustness of the life-cycle analysis in terms of the quality of the calculator/assessment method, as well as the data and scope included in the assessment (in relation to the construction elements).</p> <p>EXEMPLARY LEVEL (1 extra point): For robust LCAs that include the majority of the building's elements.</p>
Analysis example	N/A
Supporting documents	<p>03_1-DAP-Gres Porcelánico Medio EN-Argenta.pdf 03_1-DAP-Gres Porcelánico Medio ESP-Argenta.pdf</p>
Reference standard	ISO 14021-1999 / ISO 14025-2006 / ISO 14040-2006 / ISO 14044-2006 / UNE-EN 15804+A1



CATEGORY MATERIALS

➤ **MAT3, Responsible sourcing of materials** (Compliance with this requirement may add up to 3 points in **BREEAM ES NC 2015**)

Intent	To recognise and encourage the specification of responsibly sourced materials for key building elements.
Requirements	The company Argenta Cerámica, S.L. has an environmental management system EMS to develop and implement its environmental policy through ISO 14001 certification.
Assessment procedure	<p>In order to grant points for any specific construction element, at least 80% of the materials in said element must be responsibly sourced (i.e. with a certification level between 1 and 4 according to tables 34 and 35). The certification level is determined based on the robustness of the responsible sourcing proven by the suppliers/manufacturers of each material/element (through the responsible sourcing certification systems).</p> <p>EXEMPLARY LEVEL (1 extra point): When 70% of the responsible sourcing points have been achieved.</p>
Analysis example	N/A
Supporting documents	<p>04_1-Certificación AENOR ISO 14001-Argenta.pdf 04_2-Certificación IQNET-Argenta.pdf</p>
Reference standard	ISO 14001-2004



CATEGORY INNOVATION



Innovation

(Up to a maximum of 10 innovation points can be obtained in **BREEAM ES NC 2015**)

Intent	To support innovation within the construction industry through the recognition of sustainability related benefits which are not rewarded by standard BREEAM issue.
Requirements	<p>The products included in the medium stoneware tile group from the company Argenta Cerámica, S.L. may contribute to exemplary performance of the requirement:</p> <ul style="list-style-type: none"> • MAT1, Life-cycle impacts
Assessment procedure	<p>They can be obtained through a combination of the following options:</p> <p>Exemplary level in existing requirements Some BREEAM credits offer the option of obtaining extra points for demonstrating exemplary efficiency through the achievement of the exemplary level criteria defined in said credits.</p> <p>Approved innovations An extra point may be obtained for each innovation request approved by BREEAM ES, provided the criteria defined in an approved innovation request form are complied with.</p>
Analysis example	N/A
Supporting documents	See exemplary level criteria in the relevant requirement.
Reference standard	See exemplary level criteria in the relevant requirement.

OTHER CONSIDERATIONS

Other considerations

Description	There is other evidence not included in the categories for the BREEAM baseline but that may be used by the assessment technician. These are:
Supporting documents	<p>05_1-Certificado IRS KURSAAL_SLATE.pdf 05_2-Certificado IRS TANUM_PLOMO.pdf 05_3-Certificado IRS CRYSTAL_WHITE.pdf 05_4-Certificado IRS FOSTER_WHITE.pdf 06_1-Autodeclaracion ambiental del producto Bla (BPE) EN-Argenta.pdf 06_1-Autodeclaracion ambiental del producto Bla (BPE) ESP-Argenta.pdf 06_2-Autodeclaracion ambiental del producto materia prima-Argenta.pdf 07_1-Declaración material local.pdf 08_1-Declaración plan de demolición.pdf 09_1-Declaración residuos.pdf 10_1-Carta REACH a clientes-Argenta.pdf 10_2-Guía REACH sector cerámico-Argenta.pdf 11_1-Certificación AENOR ISO 9001-Argenta.pdf 11_2-Certificación IQNET ISO 9001-Argenta.pdf 12_1-Certificación CSTB Porcelánico Bla-Argenta.pdf</p>
Reference standard	<p>ASTM E1980-11 FSC-STD-50-001 (v1.2) EN FSC-STD-40-005 (v2.1) EN FSC-STD-40-004 (v2.1) EN ISO 9001-2008 EN 14411</p>